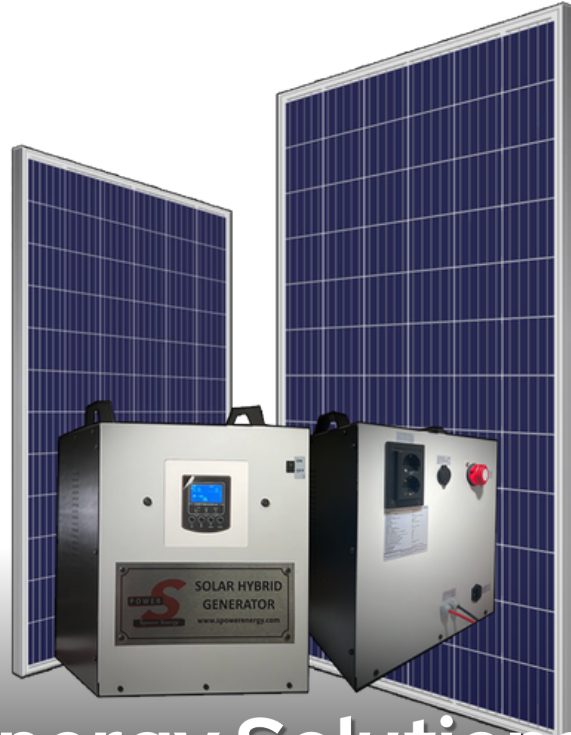




Spower Energy Hyrbid Generator



1-3-5-7- 11 KVA
OPTIONAL BATTERY PACK

Solar Energy Solutions

LITHIUM PO4 BATTERY MINIMUM 10 YEARS LIFE TIME

12 Volt 1000 watt	24 Volt 3000 watt	48 Volt 5000 watt	48 Volt 7200 watt	48 Volt 11000 watt
------------------------------------	------------------------------------	------------------------------------	------------------------------------	-------------------------------------

WHY WE USE SOLAR GENERATOR?

- ✓ Hybrid, 220 volt Charging and Panel Charging
- ✓ Charging from Panels, no fuel, no other sources
- ✓ Portable, Plug and play easy installation
- ✓ Long life and strong power with Lifepo4 batteries

CUSTOMIZING PANELS AND BATTERY PACKS

- ✓ Long life Lithium Lifepo4 Battery standart
- ✓ Extendable Battery starting at **100 Ah**
- ✓ Extendable Solar panels between **110 - 455 watts**
- ✓ Extra Battery Packs optional **100 Ah to 12.000 Ah**

24 HOUR NERGY WITH HYBRID GENERATOR

Tv + Lights + Refrigerator + Usb Charge Unlimited	1000 watt
Tv + Lights+ Refrigerator + Usb Charge Unlimited + Water Heater / Cooler + Power tools (Drill, Chain Saw, Circular Saw)	3000 watt
Tv + Lights+ Refrigerator + Water Heater / Cooler + Usb Charge Unlimited + Power tools (Drill, Chain Saw, Circular Saw) + Washing Machine + 12.000 btu A/C	5000 watt
Tv + Lights+ Refrigerator + Water Heater / Cooler + Usb Charge Unlimited + Power tools (Drill, Chain Saw, Circular Saw) + Washing Machine + 2 pcs 12.000 btu A/C	7200 watt 11.000 watt

For more information, text or call us  **+90 532 164 86 99** **Turkiye**



Spower Energy Hybrid Generator



LifePo4

Life Po4 Battery



Twin USB Outlet



Schneider Electric

MPPT Charging

OPTIONAL BATTERY PACK
1-3-5-7- 11KVA

Specifications and Technical Datasheet

Specification	1000 watt	3000 watt	5000 watt	7.200 watt	11.000 watt
Rated Power [VA/W]	1000V/1000W	3000V/3000W	5000Va/5000W	7000Va/5000W	11000Va/11000W
INPUT AC	-	-	-	-	-
Voltage [V AC]	230	230	230	230	230
Nominal Frequency [Hz]	50 / 60 (Auto Sensing)	50 / 60 (Auto Sensing)	50 / 60 (Auto Sensing)	50 / 60 (Auto Sensing)	50 / 60 (Auto Sensing)
OUTPUT	-	-	-	-	-
AC Voltage	230 ± 5%	230 ± 5%	230 ± 5%	230 ± 5%	230 ± 5%
Surge Power [VA]	2000	2000	10000	14000	21000
Waveform	Pure Sine Wave	Pure Sine Wave	Pure Sine Wave	Pure Sine Wave	Pure Sine Wave
BATTERY	-	-	-	-	-
Battery Voltage [V]	12	24	48	48	48
Battery Type And Amper	Life Po4 100 Ah	Life Po4 100 Ah	Life Po4 100 Ah	Life Po4 100 Ah	Life Po4 100 Ah
Battety Lifetime	4000 cycle	4000 cycle	4000 cycle	4000 cycle	4000 cycle
SOLAR CHARGER & AC CHARGER	-	-	-	-	-
Max. PV Open Circ. Voltage [V]	102	102	145	60-115	90-450
Max. PV Power [W]	500	500	3000	4000	11000
Max. Solar Charge Current [A]	40	40	60	80	150
Max. AC Charge Current [A]	20	20	60	80	150
Max. Charge Current [A]	60	60	140	80	150
PHYSICAL FEATURES	-	-	-	-	-
Dimension, D x W x H [mm]	38 x 46 x 46 cm	38 x 46 x 46 cm	48 x 68 x 68 cm	48 x 68 x 68 cm	48 x 68 x 68 cm
Net Weight [kg]	29,70 kg	38,5 kg	70 Kg	75 Kg	78 Kg
ENVIRONMENT	-	-	-	-	-
Humidity [%]	5 to 90	5 to 90	5 to 90	5 to 90	5 to 90
Operating Temperature [°C]	-10 ~ 50	-10 ~ 50	-10 ~ 50	-10 ~ 50	-10 ~ 50
Parallel Connection	No	No	No	Yes - 6 pcs	Yes - 6 Pcs
External Battery Support	No	No	Yes	Yes	Yes

USAGE AREAS

- LIGHTING SYSTEMS
- RESIDENTIAL SYSTEMS
- SMALL APPLIANCES
- BOAT, CARAVAN SYSTEMS
- CAMERA SYSTEMS
- CAMPING AND TENT SYSTEMS
- INDUSTRIAL DEVICES AND APPLICATIONS
- SOLAR GENERATOR SYSTEMS
- SOLAR ENERGY SYSTEMS
- WIND ENERGY SYSTEMS

For more Option and Special use please contact with Us.

Support Areas:
Europa, Africa, South Asia, Middle East

Supported Languages:

Turkish, English, Arabic, French, Russian



For more information,
text or call us



+90 532 164 86 99 Türkiye